

SIDEX s.r.l.

SERVIZI SPECIALIZZATI IN PRODOTTI SIDERURGICI

HOT ROLLED FLAT BARS WITH ROUND EDGES

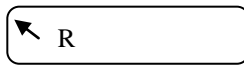
Dimensional Tolerance

DIN 1570
(EN 10092-2)



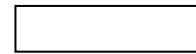
Width in mm.	50 - 60 ± 0,25	70 - 80 ± 0,30	90 ± 0,35	100 ± 0,40	120 ± 0,50
Thickness in mm.	7 - 10 ± 0,15	13 ± 0,20	16 ± 0,25	20 ± 0,30	

DIN 4620
(EN 10092-1-B)
 $R \geq 20$



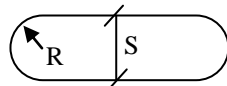
Width in mm.	Admissible difference	Spessore in mm.	
		up to 10	> 10
35 - 50	± 0,3	± 0,15	-
55 - 80	± 0,5	± 0,15	± 0,20
90 - 120	± 0,7	± 0,20	± 0,25
140	± 1,0	± 0,25	± 0,30

DIN 1017
(EN 10058)



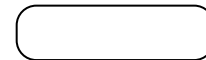
Width in mm.	Admissible difference	Thickness in mm.	Admissible difference
20 - 33,5	± 0,75	5 - 20	± 0,5
36,5 - 75	± 1,0	20 - 34	± 1,0
80 - 92	± 1,5	34 - 53	± 1,5
102 - 122	± 2,0		

DIN 59145
(EN 10092-1-A)
 $R = \frac{1}{2} S$



Width in mm.	Admissible difference	Thickness in mm.		
		up to 12	12 to 18	> 18
50 - 80	± 0,5	± 0,15	± 0,15	± 0,25
80 - 100	± 0,6	± 0,20	± 0,25	± 0,30
100 - 120	± 0,7	± 0,20	± 0,30	± 0,30

DIN 59146
(EN 10092-1-C)



Width in mm.	Admissible difference	Thickness in mm.	
		32 - 40	40 - 50
60 - 80	± 0,5	± 0,45	± 0,60
80 - 100	± 0,6	± 0,45	± 0,60
100 - 120	± 0,7	± 0,45	± 0,60

In addition to the norms above, we can supply the bars with round edges **R=25mm**, in the following range:

thickness: 20 - 22 - 25 - 30 - 35 mm

Width: 60 ÷ 100 mm

Length: bars 3 ÷ 12 M.